

OR
OLCESE RICCI

2006



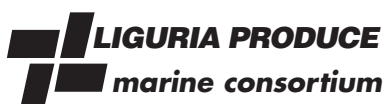


Olcese Ricci s.r.l.

Produzione attrezzature nautiche

anno 2006

Via E. Caorsi 49
16030 Sori (Ge) Italia
Tel. +39 - 0185 700425
Fax +39 - 0185 700900
<http://www.olcesericci.com>
E-mail: info@olcesericci.com



Member of CISQ Federation

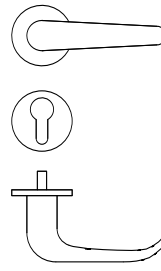
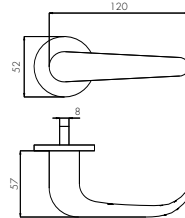
RINA
ISO 9001:2000
Certified Quality System



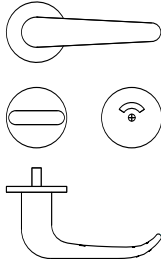


Art. 1701

Coppia maniglie in acciaio inox fuso.
 Accurata lucidatura a specchio.
 Quadro mm 8
 Lunghezza mm 120 - Sporgenza mm 57
*Stainless steel pair of handle.
 Highly mirror polishing.
 Spindle 8 x 8 mm
 Length mm 120 - Height mm 57*



Tipo A
 Set con bocchette per cilindro yale.
*Type A
 escutcheons for yale cylinder.*

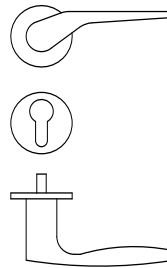
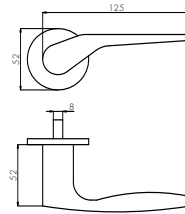


Tipo B
 Set con bocchette per libero/occupato.
*Type B
 escutcheons for turn knob*

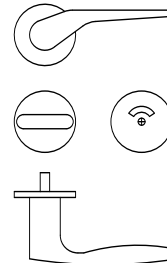


Art. 1702

Coppia maniglie in acciaio inox fuso.
 Accurata lucidatura a specchio.
 Quadro mm 8
 Lunghezza mm 125 - Sporgenza mm 52
*Stainless steel pair of handle.
 Highly mirror polishing.
 Spindle 8 x 8 mm
 Length mm 125 - Height mm 52*



Tipo A
 Set con bocchette per cilindro yale.
*Type A
 escutcheons for yale cylinder.*

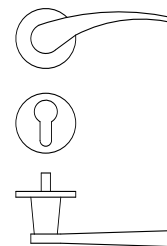
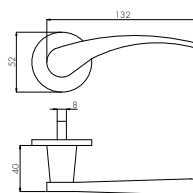


Tipo B
 Set con bocchette per libero/occupato.
*Type B
 escutcheons for turn knob*

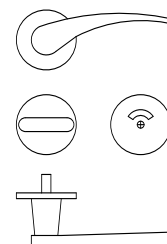


Art. 1703

Coppia maniglie in acciaio inox fuso.
 Accurata lucidatura a specchio.
 Quadro mm 8
 Lunghezza mm 125 - Sporgenza mm 52
*Stainless steel pair of handle.
 Highly mirror polishing.
 Spindle 8 x 8 mm
 Length mm 132 - Height mm 40*

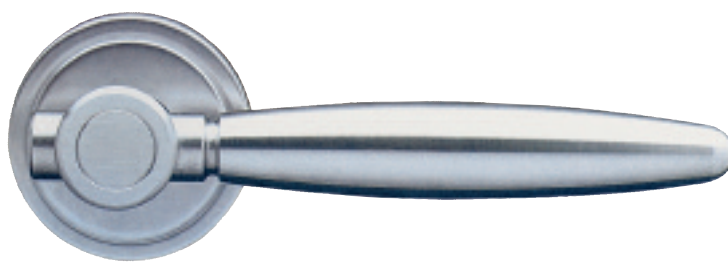
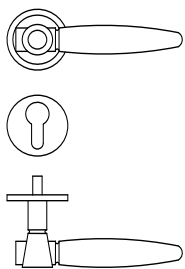


Tipo A
 Set con bocchette per cilindro yale.
 Tipo B
 Set con bocchette per libero/occupato.

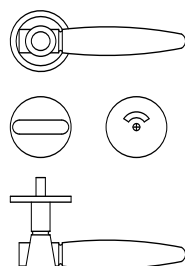


*Type A
 escutcheons for yale cylinder.
 Type B
 escutcheons for turn knob*

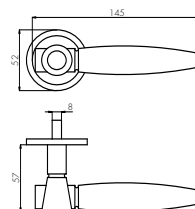
Tipo A
Set con bocchette per cilindro yale.
Type A
escutcheons for yale cylinder.



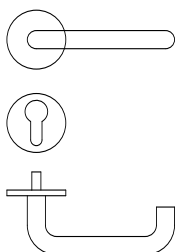
Tipo B
Set con bocchette per libero/occupato.
Type B
escutcheons for turn knob



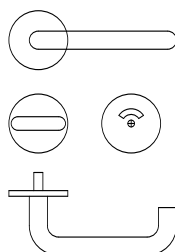
1704
Coppia maniglie in acciaio inox fuso.
Accurata lucidatura a specchio.
Quadro mm 8
Lunghezza mm 145 - Sporgenza mm 57
Stainless steel pair of handle.
Highly mirror polishing.
Spindle 8 x 8 mm
Length mm 145 - Height mm 57



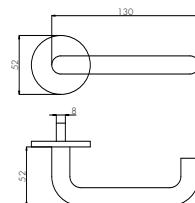
Tipo A
Set con bocchette per cilindro yale.
Type A
escutcheons for yale cylinder.



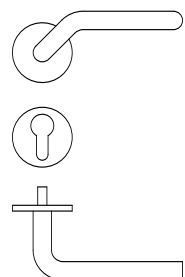
Tipo B
Set con bocchette per libero/occupato.
Type B
escutcheons for turn knob



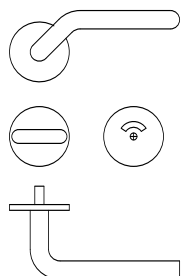
1715
Coppia maniglie in acciaio inox fuso.
Accurata lucidatura a specchio.
Quadro mm 8
Lunghezza mm 130 - Sporgenza mm 52
Stainless steel pair of handle.
Highly mirror polishing.
Spindle 8 x 8 mm
Length mm 130 - Height mm 52



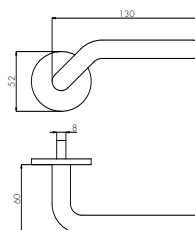
Tipo A
Set con bocchette per cilindro yale.
Type A
escutcheons for yale cylinder.

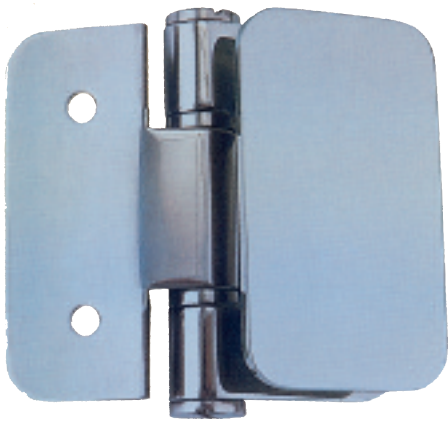


Tipo B
Set con bocchette per libero/occupato.
Type B
escutcheons for turn knob



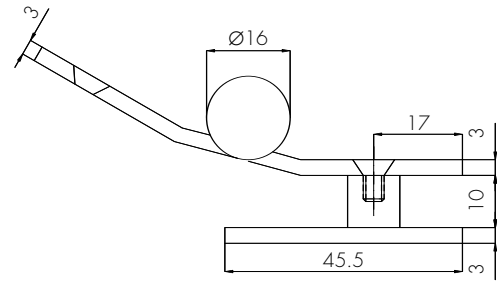
1716
Coppia maniglie in acciaio inox fuso.
Accurata lucidatura a specchio.
Quadro mm 8
Lunghezza mm 130 - Sporgenza mm 60
Stainless steel pair of handle.
Highly mirror polishing.
Spindle 8 x 8 mm
Length mm 130 - Height mm 60





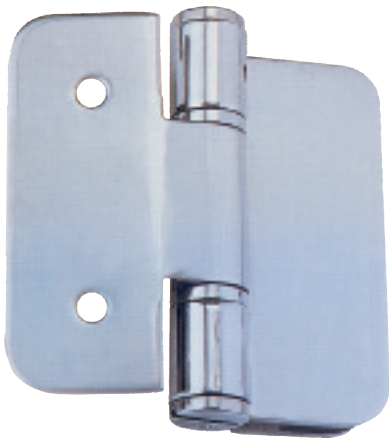
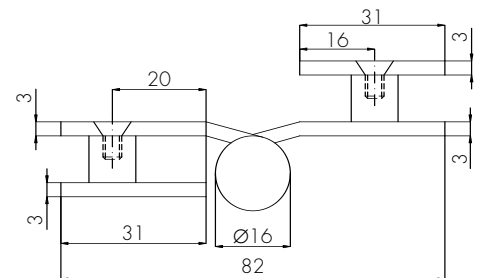
5600

Cerniera in acciaio inox per porta doccia ad angolo.
 Snodo all'interno.
 Accurata lucidatura a specchio.
Stainless steel hinge for angled shower door.
Inside joint
Highly mirror polished.



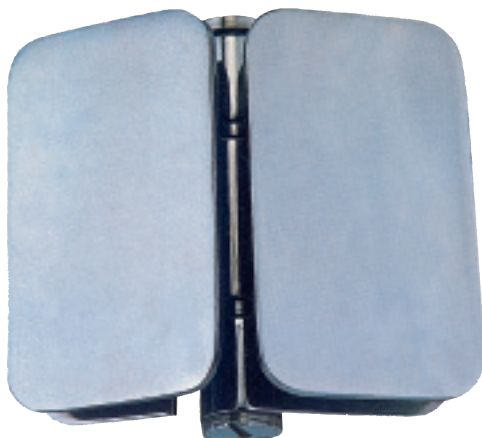
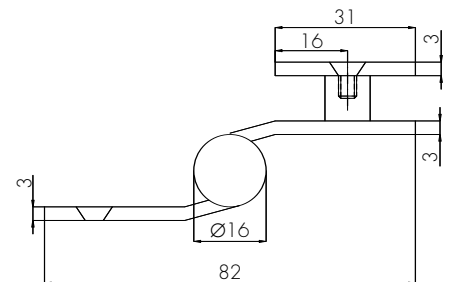
5601

Cerniera in acciaio inox per porta doccia in piano.
 Snodo all'esterno.
 Accurata lucidatura a specchio.
Stainless steel hinge for flat shower door.
Outside joint
Highly mirror polished.



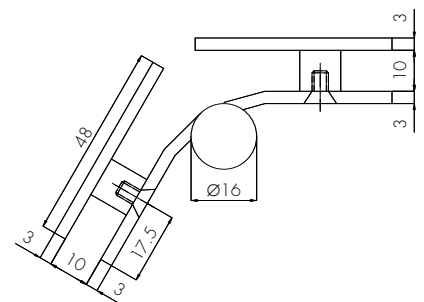
5602

Cerniera in acciaio inox per porta doccia con snodo all'esterno.
 Accurata lucidatura a specchio.
Stainless steel hinge for shower door.
Outside joint
Highly mirror polished.



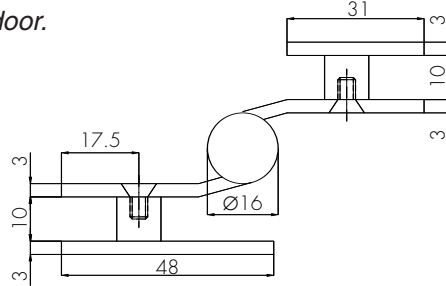
5603

Cerniera in acciaio inox per porta doccia ad angolo.
 Accurata lucidatura a specchio.
Stainless steel hinge for angled shower door.
Highly mirror polished.

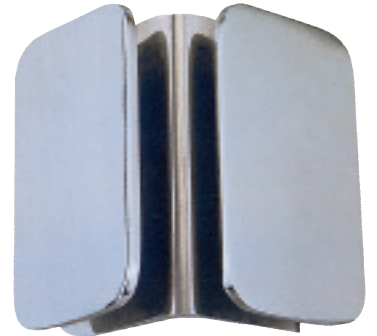
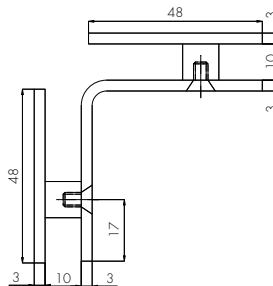


5605

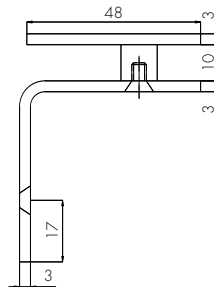
Cerniera in acciaio inox per porta doccia con snodo all'esterno.
 Accurata lucidatura a specchio.
Stainless steel hinge for shower door.
Outside joint.
Highly mirror polished.

**5620**

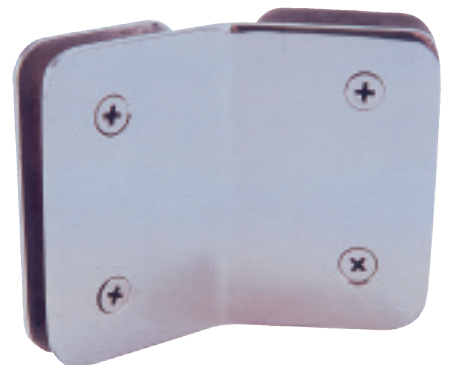
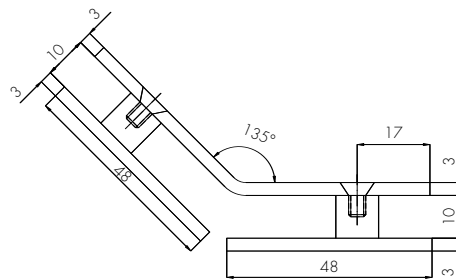
Staffa in acciaio inox ad angolo per cristallo / cristallo.
 Accurata lucidatura a specchio.
Stainless steel angled bracket.
Glass / glass.
Highly mirror polished.

**5621**

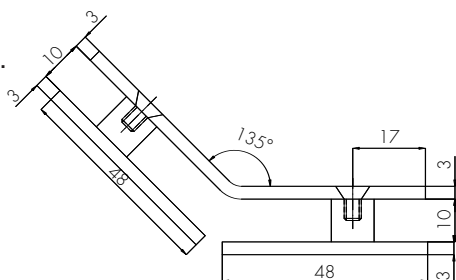
Staffa a 90° in acciaio inox ad angolo per cristallo / parete.
 Accurata lucidatura a specchio.
Stainless steel 90° bracket.
Glass / wall.
Highly mirror polished.

**5622**

Supporto in acciaio inox ad angolo 135° per cristallo / cristallo.
 Accurata lucidatura a specchio.
Stainless steel 135° bracket.
Glass / glass.
Highly mirror polished.

**5623**

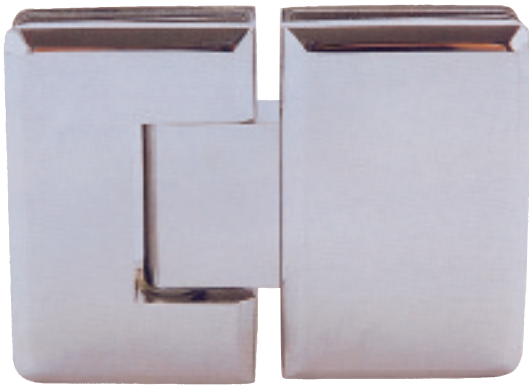
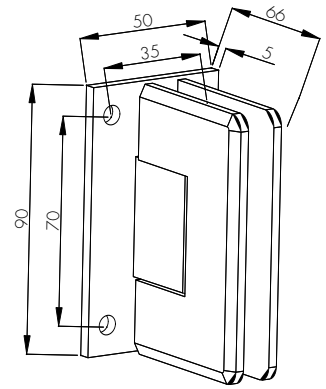
Supporto in acciaio inox ad angolo 135° per cristallo / parete.
 Accurata lucidatura a specchio.
Stainless steel 135° bracket.
Glass / wall.
Highly mirror polished.





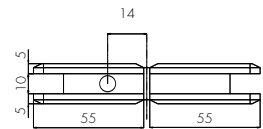
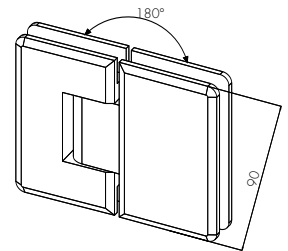
5630

Cerniera in ottone cromato lucido per porte docce parete / cristallo.
Chrome plated brass shower hinge.
Wall / glass.



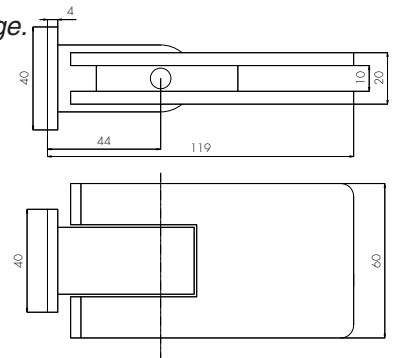
5631

Cerniera in ottone cromato lucido per porte docce cristallo / cristallo.
Chrome plated brass shower hinge.
Glass / glass.



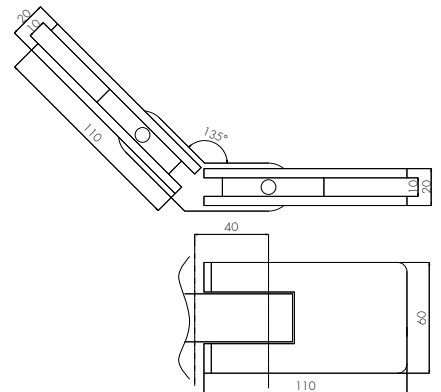
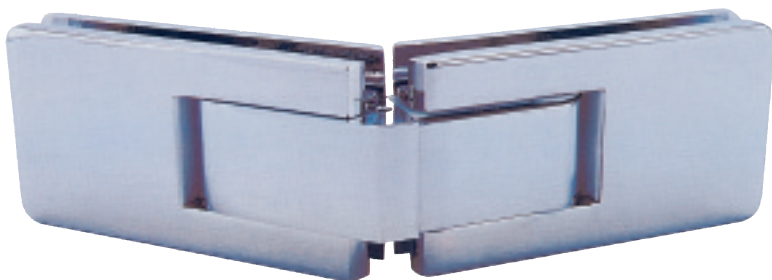
5632

Cerniera in ottone cromato lucido per porte docce parete / cristallo.
Chrome plated brass shower hinge.
Wall / glass.



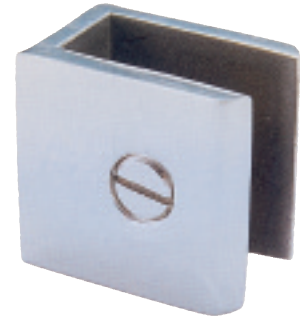
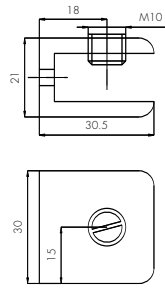
5633

Cerniera in ottone cromato lucido per porte docce cristallo / cristallo.
Chrome plated brass shower hinge.
Glass / glass.

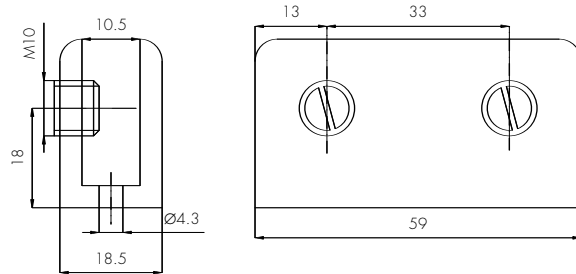


5640

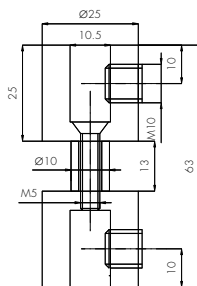
Supporto per cristalli in ottone cromato.
Chrome plated brass bracket

**5641**

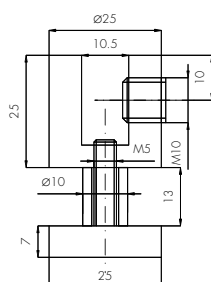
Supporto per cristalli in ottone cromato.
Chrome plated brass bracket

**5642**

Supporto per cristalli in ottone cromato.
Chrome plated brass bracket

**5643**

Supporto per cristalli in ottone cromato.
Chrome plated brass bracket





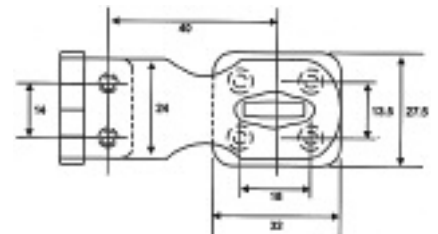
3551

Cerniere invisibile in ottone per mobili.
Brass concealed hinge for furniture.

tipo	diametro
A	10
B	14
C	18

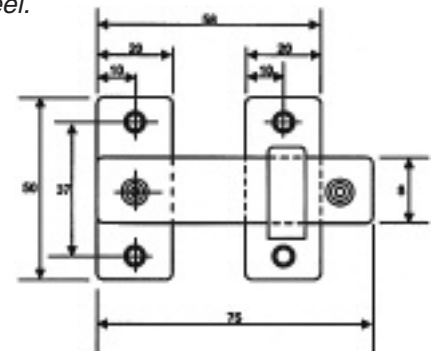
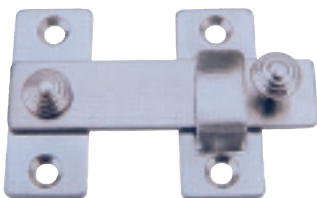
3393

Cerniera in acciaio inox con scontro girevole e portalucchetto.
Stainless steel padlock hinge.



2090

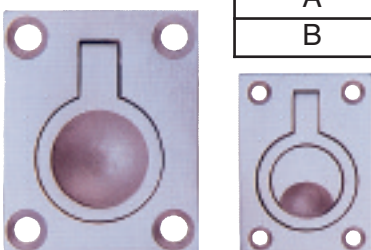
Tavella in acciaio inox per antine armadi.
Casement fastener in stainless steel.



1524

Alzapaiolo rettangolare a filo in acciaio inox.
Stainless steel pull lift ring

tipo	dimensioni
A	mm 38x48
B	mm 44x62



1523

Alzapaiolo a filo in acciaio inox.
 Dimensioni mm 89x89
Stainless steel pull lift ring.





Via E. Caorsi 49
16030 Sori (Ge) Italia

Tel. +39 - 0185 700425
Fax +39 - 0185 700900
<http://www.olcesericci.com>
E-mail: info@olcesericci.com